

AHD 1015 TC / AHD 1015 MTC

15" TFT Colour Touch Screen Display with integrated PC



User-friendly touch operation

Custom-made configuration

Graphical display of measured values

Analogue as well as digital display

PC and interfaces integrated

The visualization of ship data, general status messages and alarms forms an important component of modern alarm and safety systems. There is a steady increase in the complexity and volume of the information generated, necessitating higher speed and accuracy of a visualisation system. This is enabled by means of high resolution displays, such as AHD 1015 TC resp. AHD 1015 MTC with integrated compact PC.

The device is cooled passively, which means it works without a fan and is therefore insensitive against dust. No dust is raised or blown out. No other moving components, such as a hard disk drives, are used. Therefore, the device is less shock-sensitive and no disturbing noise is produced.

The incorporated software is operated by means of a capacitive touch screen. An additional feature is an integrated buzzer for acoustic alarm messages.

The unit, designed for flush-mounting in dashboards, control consoles or switch boxes, provides a fully sunreadable TFT display. The viewing angle is 160° horizontal (80° left, 80° right) and 140° vertical (80° top, 60° bottom) with no visible losses in display quality.

Version AHD 1015 MTC additionally provides a VGA, DVI and Video In- Interface (BNC).

Screen layout

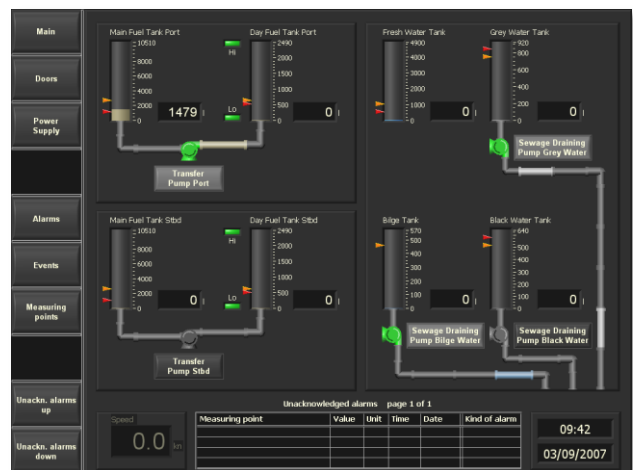
These screenshots have been taken from a typical system for a 86" explorer yacht. All components are tailored to the specific ship and her on-board systems.

Overview



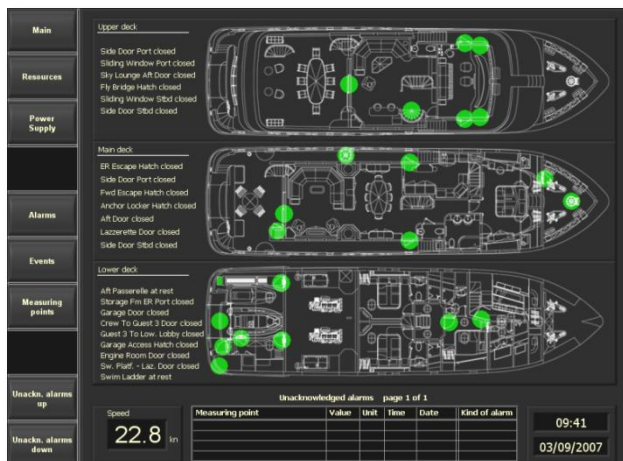
An overview of many ship systems, including navigation lights, anchors and other devices having an effect on the ship's readiness to sail.

Resources



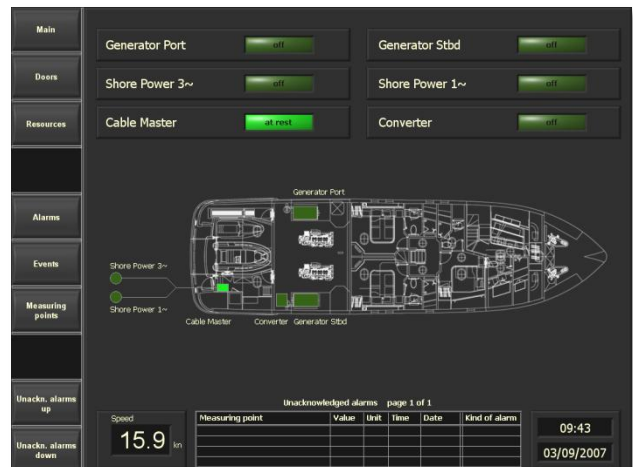
Tank levels including transfer pump status at a glance.

Doors



Depicts open or closed doors (red for open, green for closed). Doors that must be closed when sailing will trigger an alarm message if open when the ship sails

Power



Visualizes active and inactive power supply systems.

Navigation lights



Detailed navigation lights status and operation interface.

Cameras



Up to 4 camera views simultaneous are possible. Zooming and turning the cameras via touch screen.

Alarms



A list of all alarm messages including when the alarm was triggered, the corresponding measured value and the type of alarm (warning or main alarm).

Events



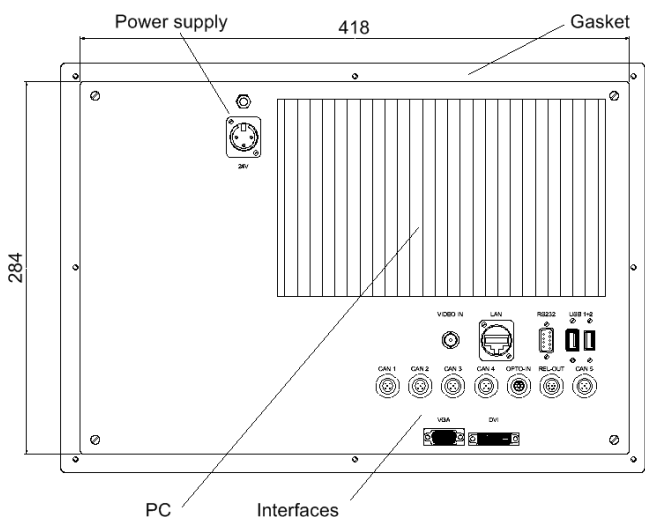
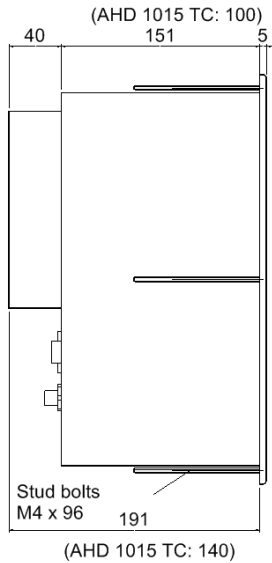
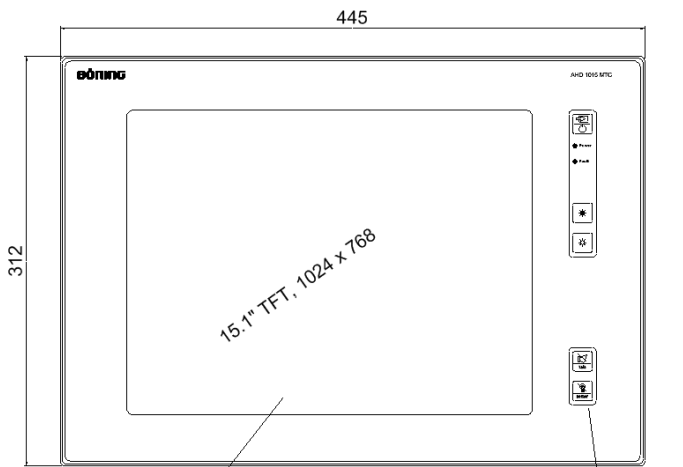
A comprehensive list of all alarm and status messages.

Measuring points



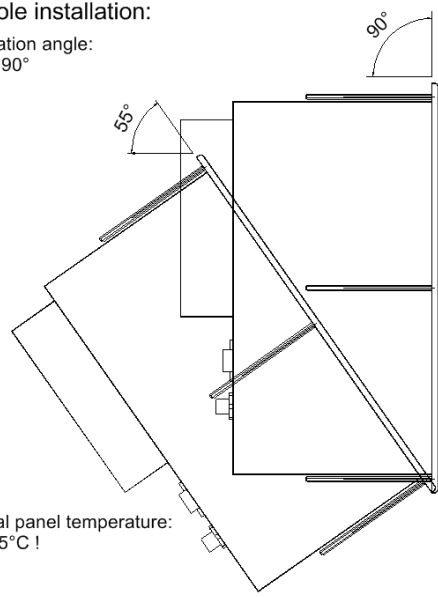
Complete measuring point list in tabular form with corresponding values.

Dimension:



Panel/console installation:

Installation angle:
55° ... 90°



Technical Data:

Power supply:	9 ... 32 VDC
Power consumption:	appr. 40 W (24 VDC)
Display resolution:	XGA 1024 (H) x 768 (V) pixels
Visible screen diameter:	15", 304mm x 228mm
Colour depth:	16 Mio. colours (24 Bit)
Luminous intensity:	600 cd/m ² (typ.)
Dimming:	4...100%
Operating temperature:	-30 °C ... +70°C
Storage temperature:	-50 °C ... +85°C
Weight:	appr. 9 kg (TC), appr. 10 kg (MTC)
Degree of protection:	Front side IP 67, (IP 56 acc. to type test approval), Rear side IP 55
Dimension W x H x D:	445mm x 312mm x 145mm (TC) 445mm x 312mm x 196mm (MTC)
Desk cut-out W x H:	420mm x 287mm
Processor:	Pentium Mobile 1.7 GHz
RAM:	1 GB
Flash disk:	1 GB
Interfaces:	Power input 4 x CAN bus Digital in (4 x Optocoupler) Digital out (2 x Relay) 2 x USB 1 x COM (RS232) 1 x LAN 1 x VIDEO IN (only MTC), PAL 50Hz 1 x VGA (only MTC) 1 x DVI (only MTC)
At an internal temperature of > 65°C the integrated overheating protection reduces display brightness.	
Observe at installation in panels/consoles:	
Internal panel temperature:	Max. 45°C
Installation angle:	55° ... 90°